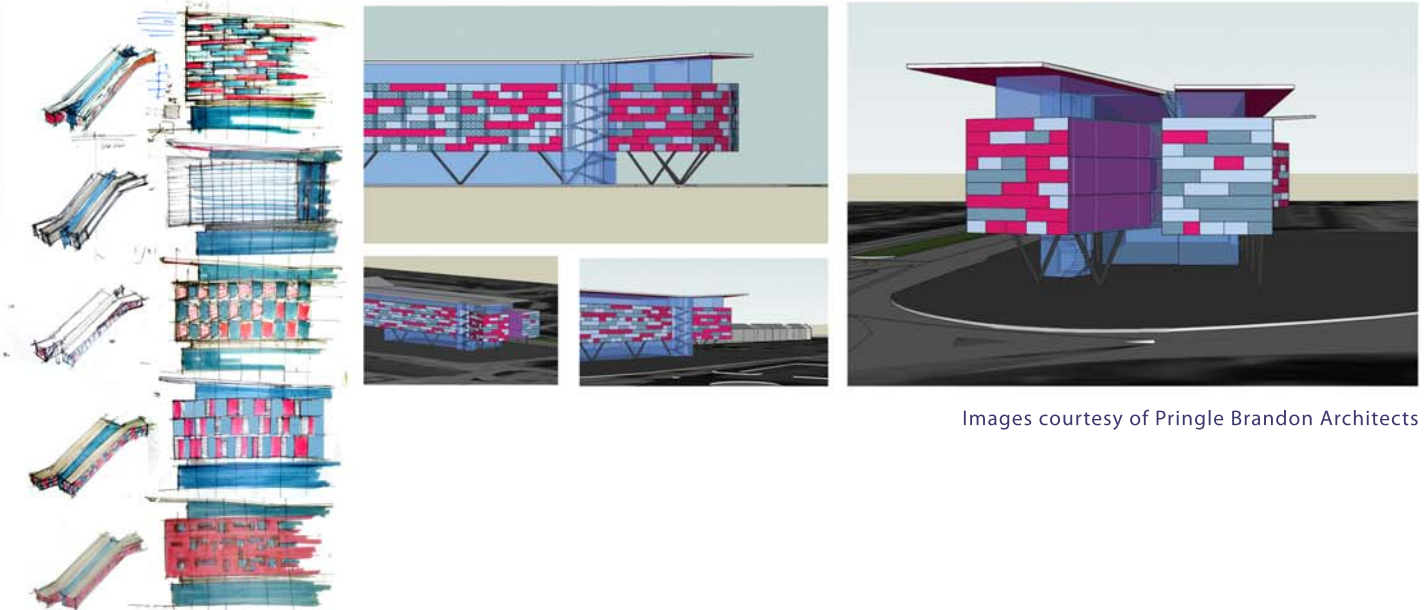


HOTEL SOUTH EAST ENGLAND



Images courtesy of Pringle Brandon Architects

AIRPORT HOTEL

Brief: Airport Hotel in the South East of England
 Client: Confidential
 Architect: Holly Porter @ Pringle Brandon Architects

Working with Pringle Brandon Architects, Surface to Air's design for this modular airport responds to its locational challenge through its unique massing. Sculpted as two 'slipped' bars, which twist in response to the orientation of the runway and main road, the massing breaks down the length, breadth and volume of the scheme. Designed as a tripartite elevation: the base made of clear glass, the body formed from animated cladding patterning and a cantilevered oversailing roof - the scheme is a contemporary addition to the development of the area.

SURFACE TO AIR ARCHITECTS

DIRECTORS: HOLLY PORTER MA(Cantab) MA(RCA) / PASCALE SCHEURER MA(Cantab) DipArch MSc RIBA
 e: info@surface-to-air.com t: 02074661260 / 07950563222 w: www.surface-to-air.com
 10 Bonhill Street, London, EC2A 4QJ Reg. company no. 05302392 / VAT reg. no. 859-0904-94